

I HERBY CERTIFY THAT THIS SURVEY, PLAN, OR REPORT WAS PREPARED BY ME OR UNDER MY DIRECT SUPERVISION, THAT THE UNITED STATES PUBLIC LAND SURVEY MONUMENT RECORD IS CORRECT AND COMPLETE TO THE BEST OF MY KNOWLEDGE AND BELIEF, AND THAT I AM A DULY LICENSED LAND SURVEYOR UNDER THE LAWS OF THE STATE OF MINNESOTA.

Jacob R. Cunningham
SIGNATURE

1-8-18
DATE

JACOB R. CUNNINGHAM
MN LICENSE NO. 49547

STATE OF MINNESOTA, }
COUNTY OF MURRAY, } ss.

I hereby certify that the within Instrument was filed in this office for record on the 11TH day of JANUARY A.D. 20 18 at 9:00 o'clock A. M. and was duly recorded as Document No. _____

Evelyn C. Larson
County Recorder

CERTIFICATE OF LOCATION OF GOVERNMENT CORNER

NORTH QUARTER CORNER OF SECTION 29, TOWNSHIP 106N RANGE 42W, 5TH P.M.

STATE OF MINNESOTA, COUNTY OF MURRAY

AT THE CORNER LOCATION SHOWN ON THE SKETCH: 1/2" IRON PIPE, DOWN 0.2'

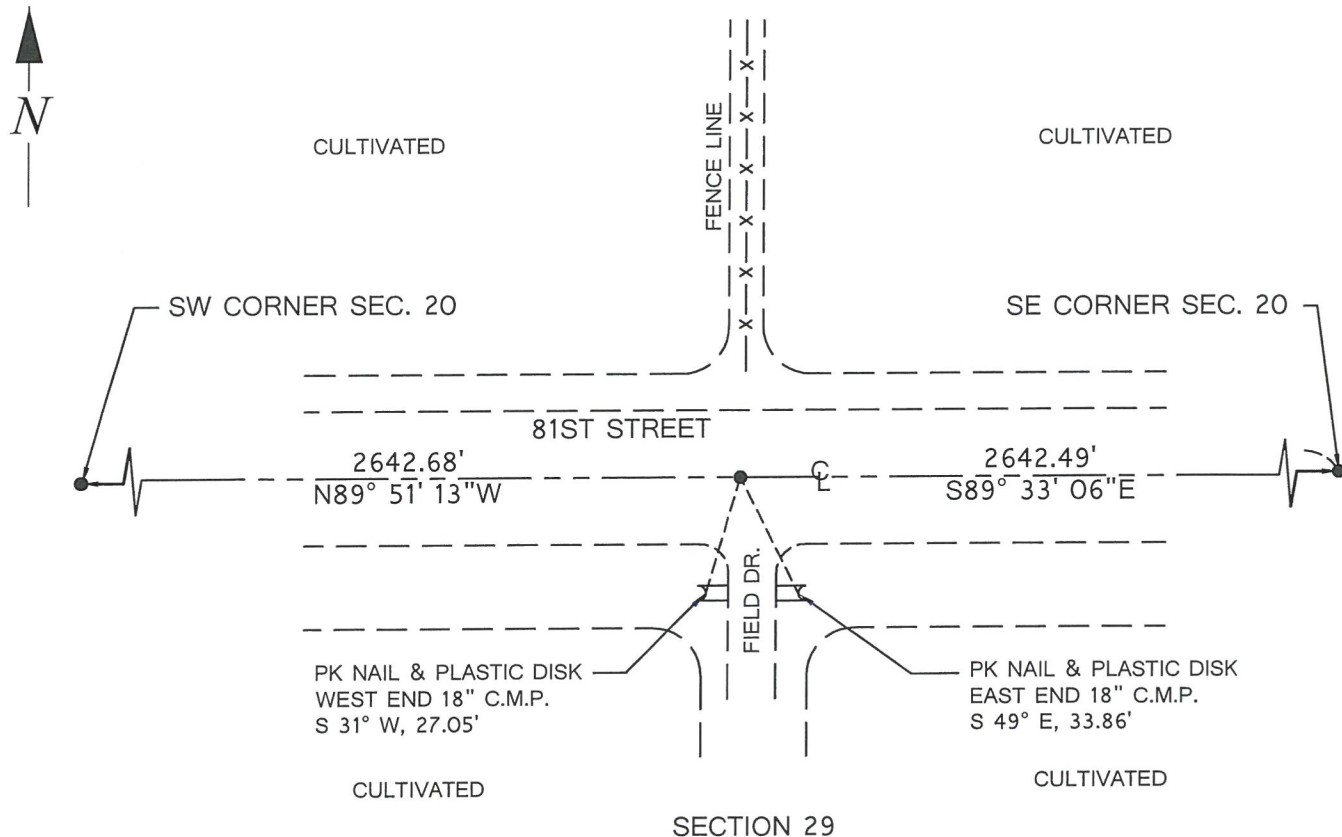
ON 7-12-2017 FOUND A(N) 10" x 12" x 18" STONE, DOWN 4', 1.0' FROM IRON PIPE
DATE

LEFT MONUMENT AS FOUND, LOWERED MONUMENT, REMOVED MONUMENT (EXPLAIN)

ON 7-12-2017 PLACED A(N) 4"X20" CAST IRON MONUMENT, DOWN 8" OVER STONE
DATE

SKETCH OF REFERENCE TIES

SECTION 20



NAD 83 (2011 ADJ.) MURRAY COUNTY COORDINATES

N= 142463.643 E= 461272.632 (COORDINATES ARE SHOWN AS INFORMATION ONLY, SUBJECT TO VERIFICATION.)

NORTH QUARTER CORNER OF SECTION 29, TOWNSHIP 106 NORTH,
RANGE 42 WEST OF THE 5TH PRINCIPAL MERIDIAN

- 1866 The U.S. Deputy Surveyor, J.W. Bishop, set a post in mound for the original corner.
- 1912 J.W. Woolstencraft, dated November 10, 1912, completed a survey of Section 20. The survey shows a 10"X12"X18" stone in road, along with distances of 2644 to the southwest and southeast corners of Section 20. This information is found in the Murray County Recorder's Office, Surveyor's Record Book A, on Page 228.
- 2006 Ulteig Engineers, Inc., Survey Crew found a 1/2" iron pipe.
- 2017 In July, Great River Energy Survey Crew found 1/2" iron pipe, down 0.2 feet. Located the monument with GPS, removed, and excavated a 6' X 10' X 4' deep area. Found a 10" X 12" X 18" stone, 4 feet below the road surface and at original grade, 1.0 feet from the 1/2" iron pipe location. Left stone as found and set a 4" X 20" Cast Iron Monument (C.I.M.) above the stone, 8" below road grade. After analysis of the record and survey information, the found stone is accepted as marking the location of this Public Land Survey Corner.